



PARKS WITHOUT BORDIERS

Ideas for the Next Generation of Urban Parks and Public Space



NYC Parks





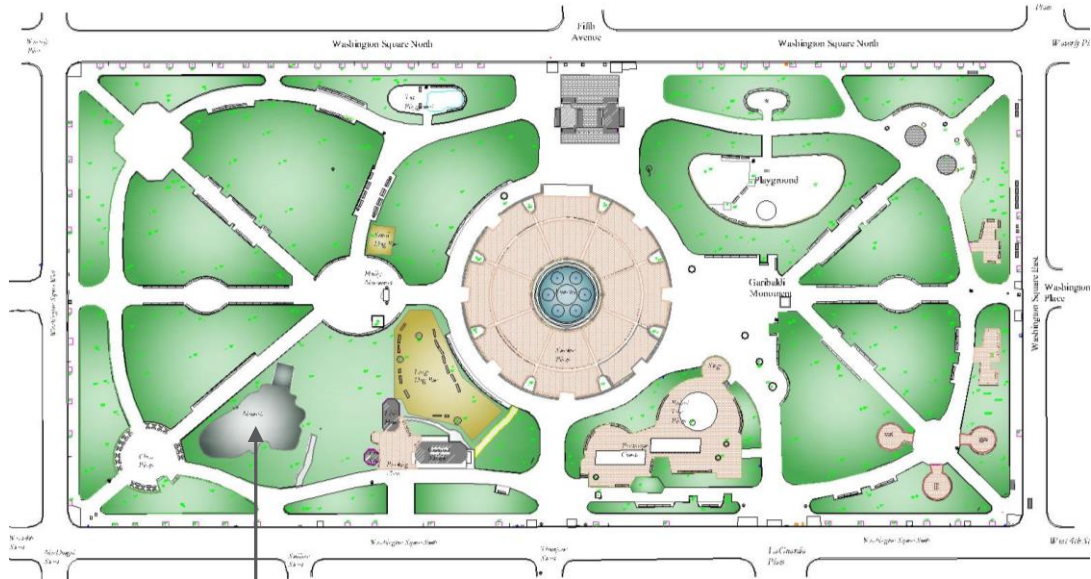
Enhancing Park Experience through Creative Play

Parks

Washington Square Park

1970's Mounds

- Adventure Play



Play Mounds



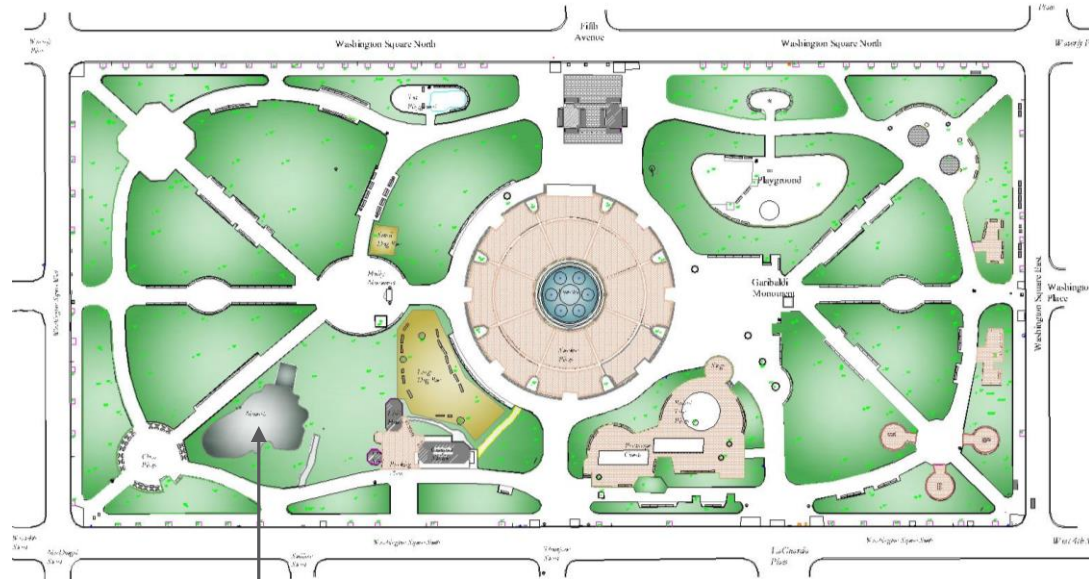
© Nick DeWolf



Case Study – Washington Square Park

Pre-Conditions

- **Public Safety**
 - Three 5' High Asphalt Mounds
 - Visual Barrier – Impaired Sight Lines
 - Known as “Drug Dealing” Corner
 - Unsafe Play Conditions



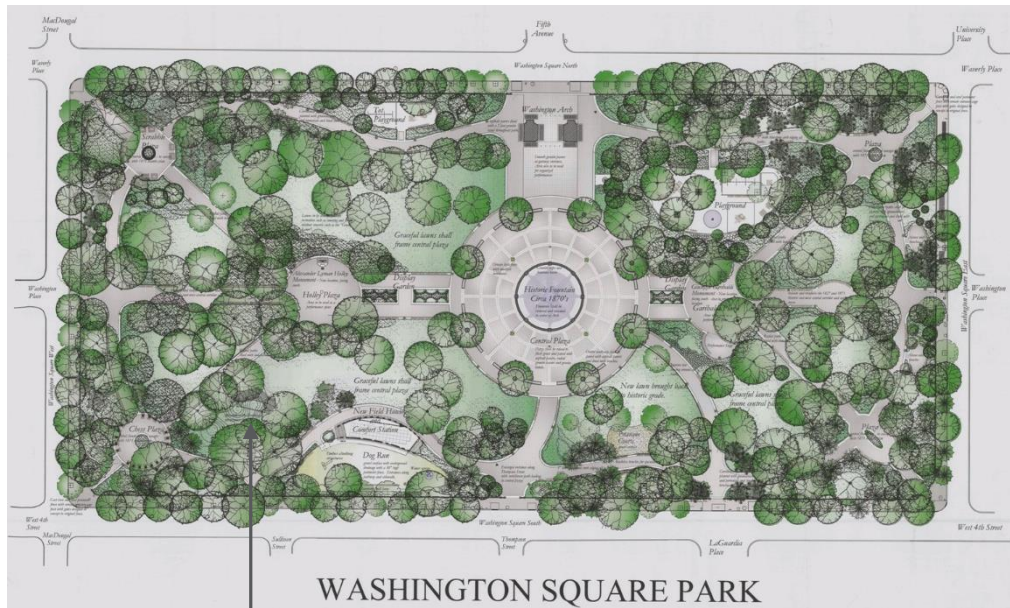
Play Mounds



Case Study – Washington Square Park

Play Mounds – Creative Play

- Location
 - Creative Play – Open Meadow
 - No Borders



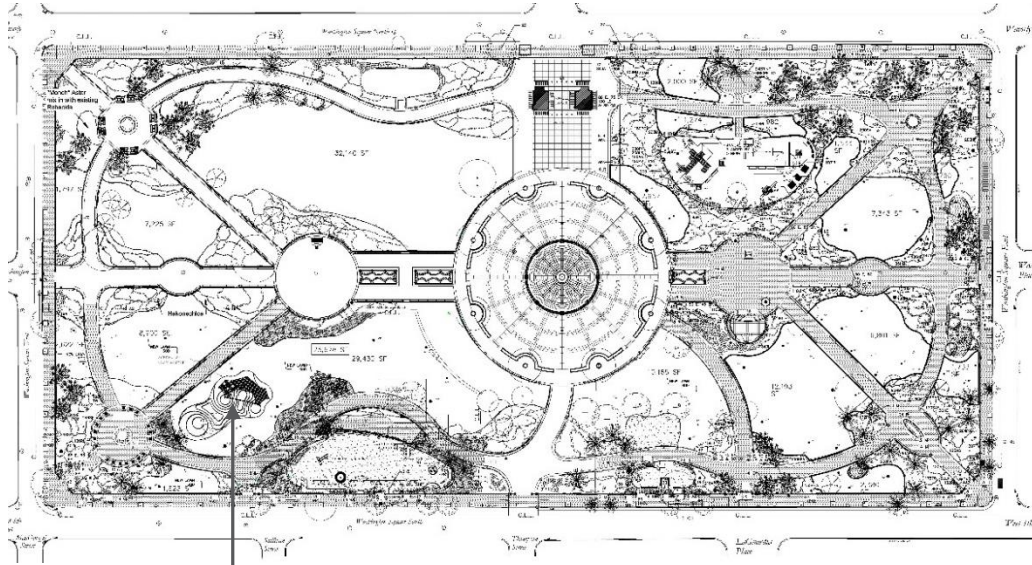
Play Mounds



Case Study – Washington Square Park

Play Mounds – Creative Play

- Initial Project Goals – Interrelate
 - Public Safety
 - Challenging
 - Appropriateness
 - Shade



Play Mounds

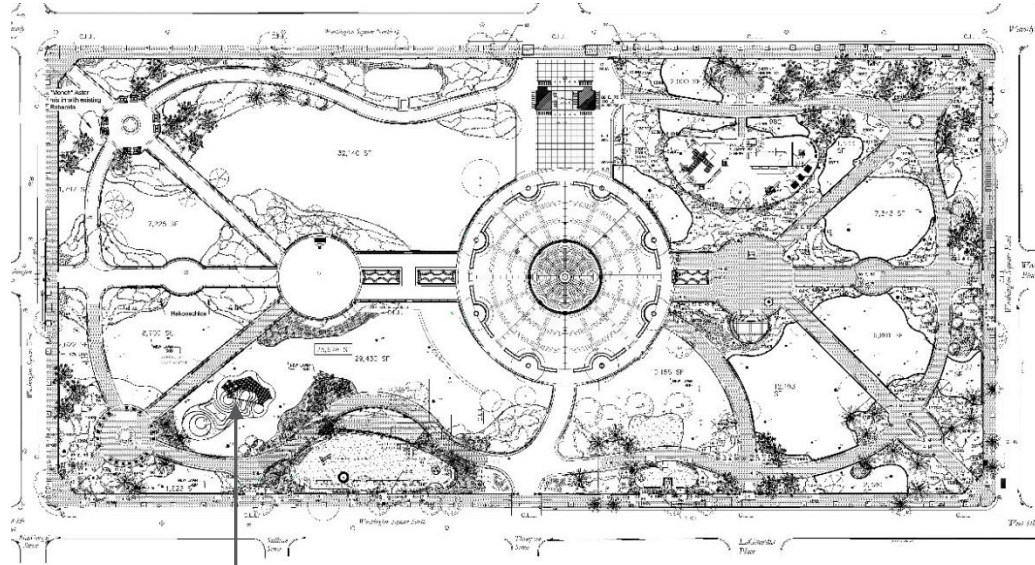


NYC Parks

Case Study – Washington Square Park

Play Mounds

- **Public Safety**
 - Slightly Submerge – Open View Corridors – Creativity
 - Allows for Multi-Purpose Use
 - Safe Adventure



Play Mounds

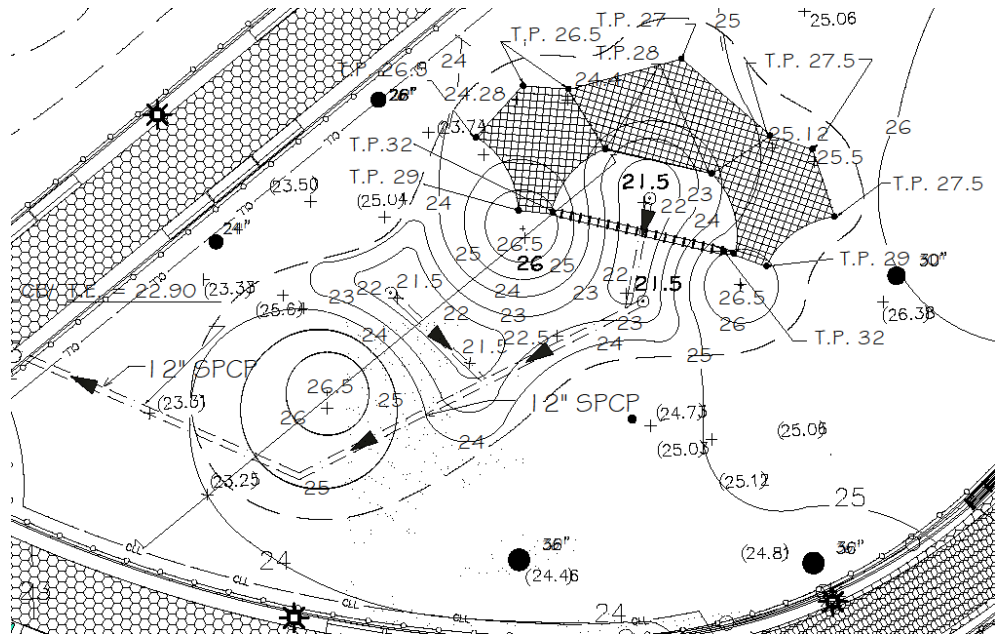


NYC Parks

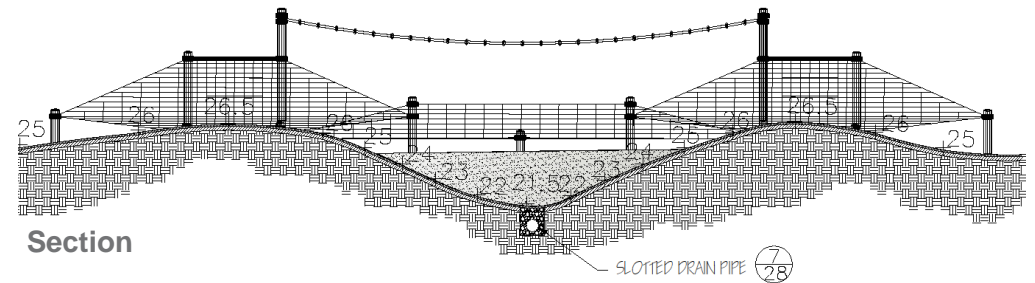
Case Study – Washington Square Park

Play Mounds

- **Challenging** – Innovative Play – Not Programmed
 - Mounds – Subtle Grading – Safe For Rolling
 - Cable Structures – Climbing – Hanging – Energetic



Grading Plan



Section

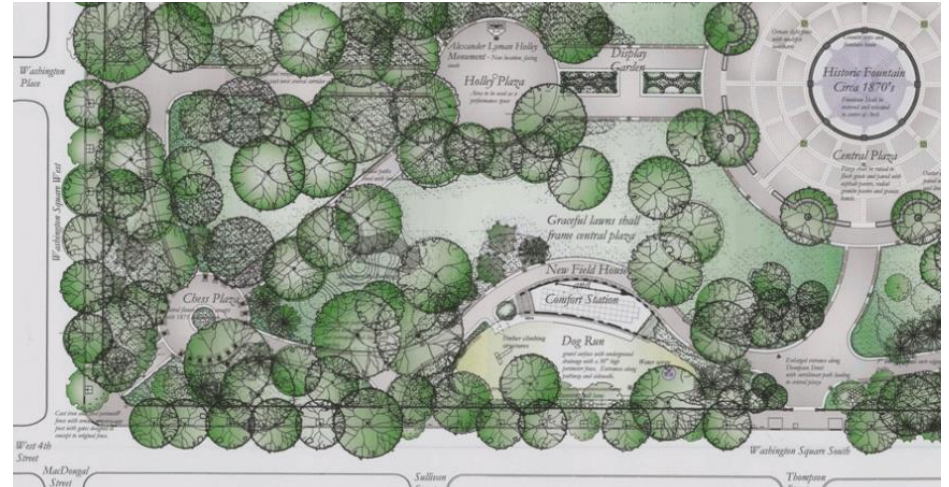


NYC Parks

Case Study – Washington Square Park

Play Mounds

- **Appropriateness** – Significant park in an Historic District
 - Synthetic Turf – Graceful Greener Park
 - Cable Play – Play Value – Transparent – Color
 - Renewed Sense of Place

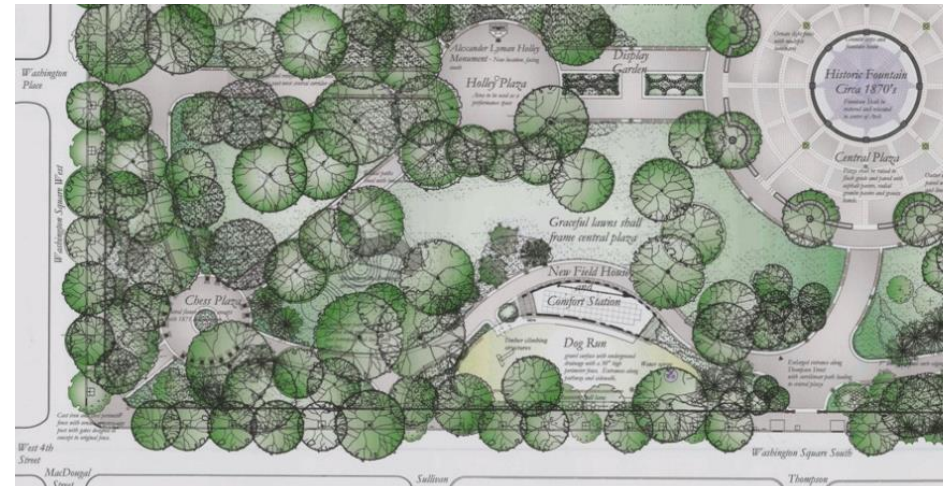


NYC Parks

Case Study – Washington Square Park

Play Mounds

- **Shade – Nature**
 - Tree Canopy – Provide Relief From Heat
 - Contact to Nature



Case Study – Washington Square Park

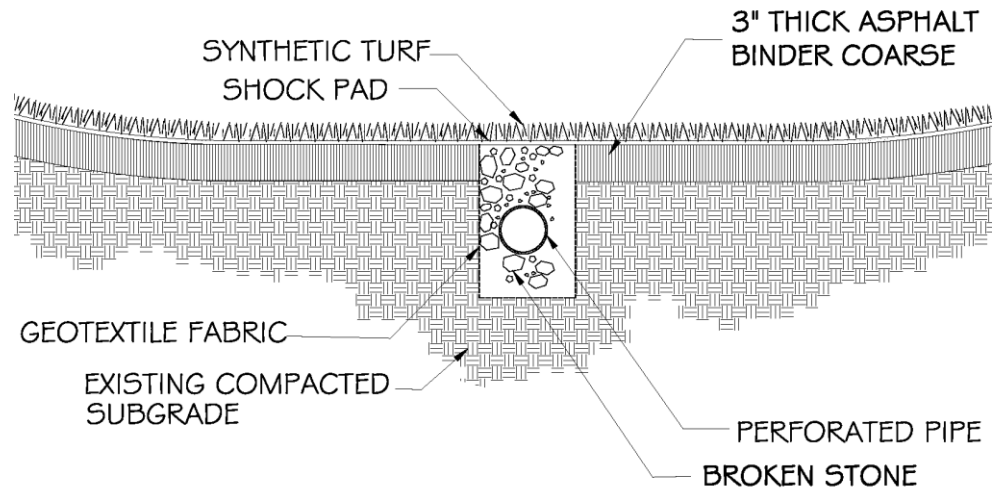
Play Mounds – Universal Success

- Interactive
 - Engaging Parents – Alternative activities for very young children and active older adults
 - Public Enjoyment



Play Mounds – Construction – Subgrade

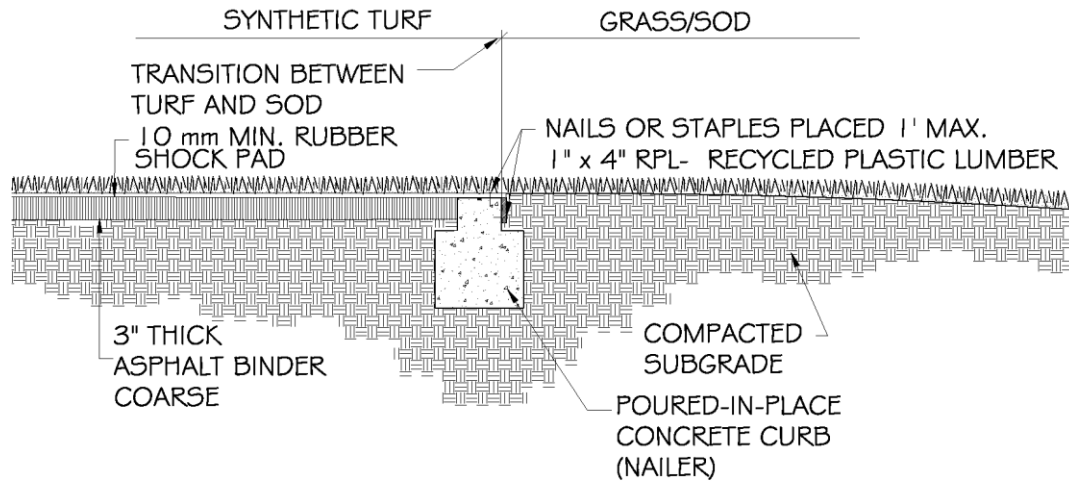
- Storm Water Capture
 - Perforated Pipe
 - Broken Stone
 - Permeable Geotextile Fabric



Case Study – Washington Square Park

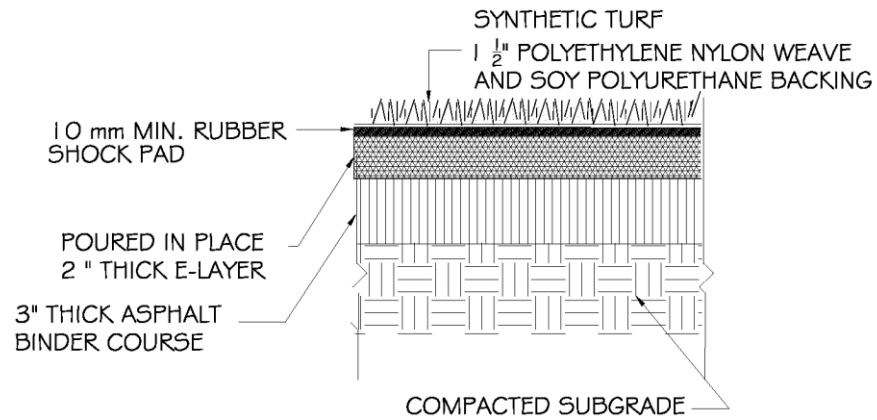
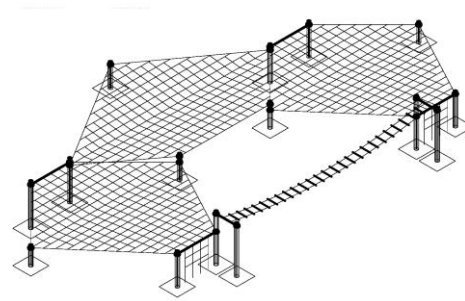
Play Mounds – Construction – Subgrade

- Excavation – Land Forms – Clean Fill and Compaction
- Concrete Curb (Nailer) and Recycled Plastic Lumber



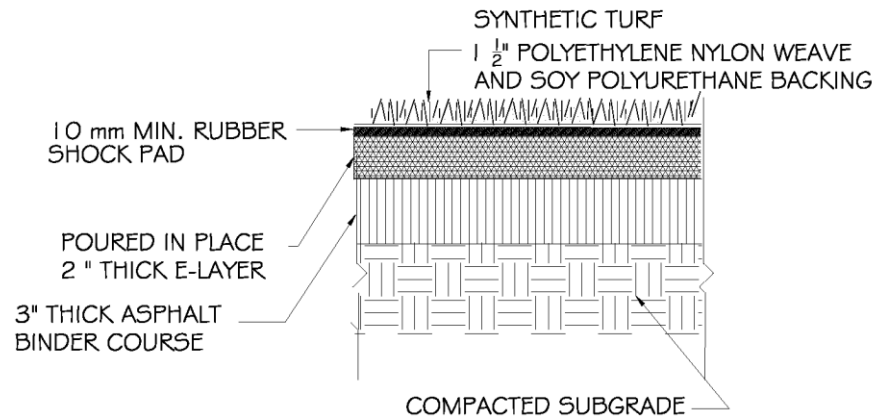
Play Mounds – Construction

- 3" Thick Asphalt Binder Course
- Concrete Footings
- Post and Cables



Play Mounds – Construction

- Poured-in-Place 2" Thick E-Layer
- 10 MM Rubber Shock Pad



Play Mounds – Construction

- Adhesive – Sprayed Glue
- Minimize Seams - Glued
- Laying Synthetic Turf



Play Mounds – Surface

- Synthetic Turf – Durability / low maintenance
- Continual Lawn – Prohibit / avoid Skateboarding
- Health and Safety For All Ages
- Recycling Capabilities – LEED Certification
 - Bio Based Soy Backing



Case Study – Washington Square Park

Imagination Playgrounds



Site Location



History



NYC Parks

Case Study – Imagination Playground at Burling Slip



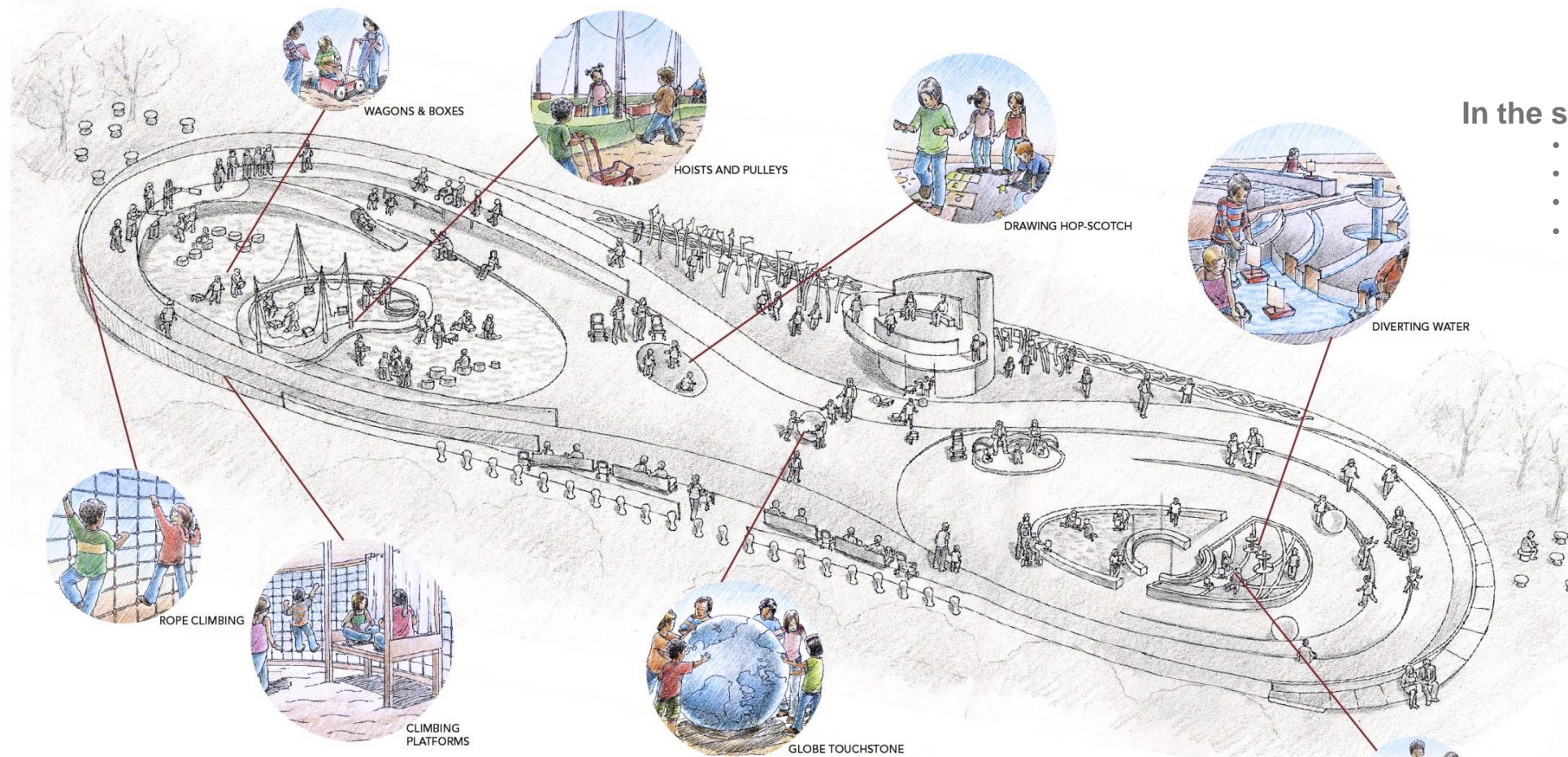
Existing conditions

image credit: Rockwell Group



NYC Parks

Case Study – Imagination Playground at Burling Slip



In the spirit of Adventure Play

- Sand play
- Water play
- Block play
- Running Ramp

"LOOSE PARTS" PLAY

MARITIME

- o telescopes
- o boat making
- o sandbags
- o ropes
- o balls
- o magnets
- o bunkbeds/ platforms
- o sails
- o float connector toys

COMMERCIAL/INDUSTRIAL

- o burlap bags
- o building blocks
- o boxes
- o crates
- o wheelbarrows
- o wagons
- o barrels
- o baskets

COMMUNICATION

- o market calls
- o mirrors
- o bells
- o ship horns
- o signal flags
- o radios
- o megaphones

SENSES

- o sand
- o water
- o cloth

GAMES

- o art supplies
- o chalk
- o New York Street Games

ARCHEOLOGY

- o sand molds
- o spades
- o buckets
- o brushes

FIXED PLAY VALUE

OBJECTS

- o Sculpted Landscape
- o Touchstone
- o Ramp

ACTION

- o Slide
- o Chalkboard/ Drawing Sidewalk
- o Sandbox/ Water
- o Toddler Sandbox
- o Rope Net
- o Climbing Platforms

SENSES

- o View from Crow's Nest
- o Listening Forest
- o Whispering Fence
- o Telescopes
- o Reading
- o Acting

image credit: Rockwell Group



NYC Parks

Case Study – Imagination Playground at Burling Slip

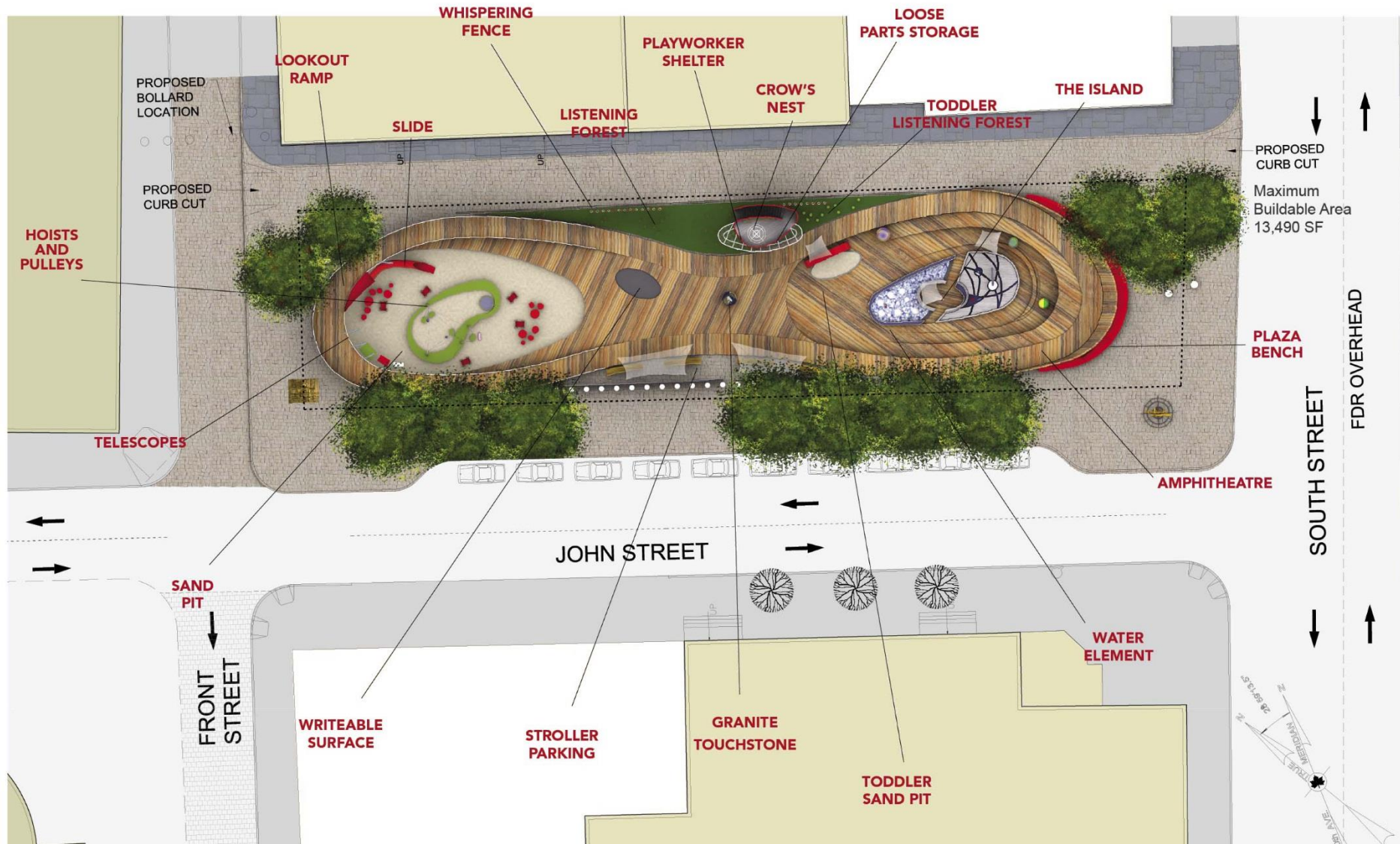


image credit: Rockwell Group



Case Study – Imagination Playground at Burling Slip



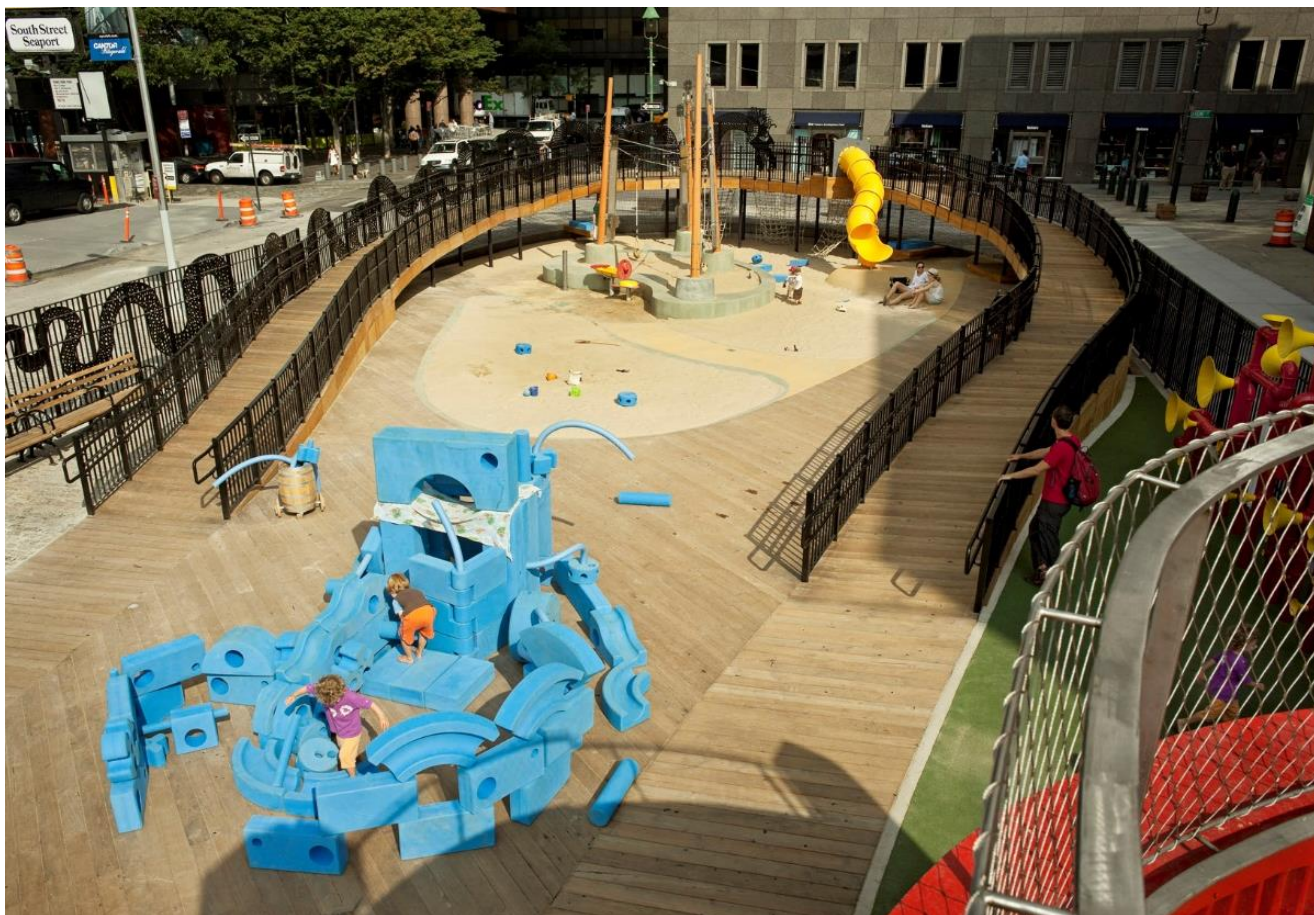
Sand Play Area

image credit: Rockwell Group

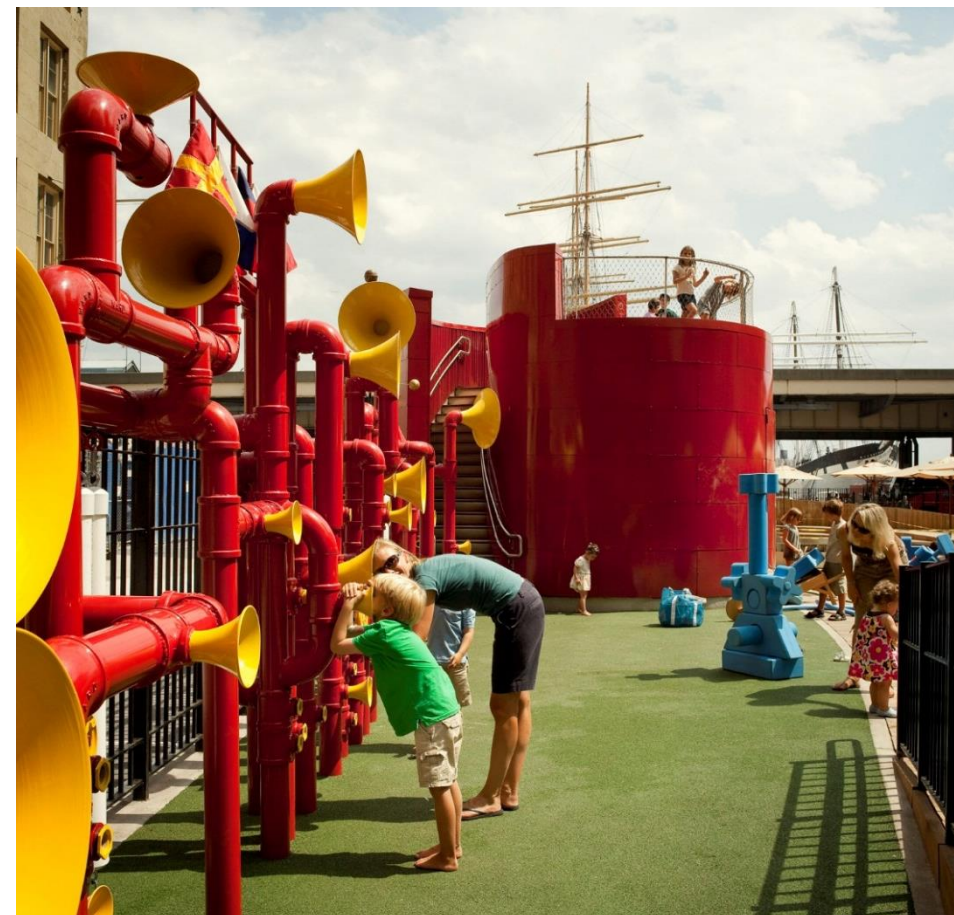


NYC Parks

Case Study – Imagination Playground at Burling Slip



Sand Play Area



Talk Tube

image credit: Rockwell Group



Case Study – Imagination Playground at Burling Slip

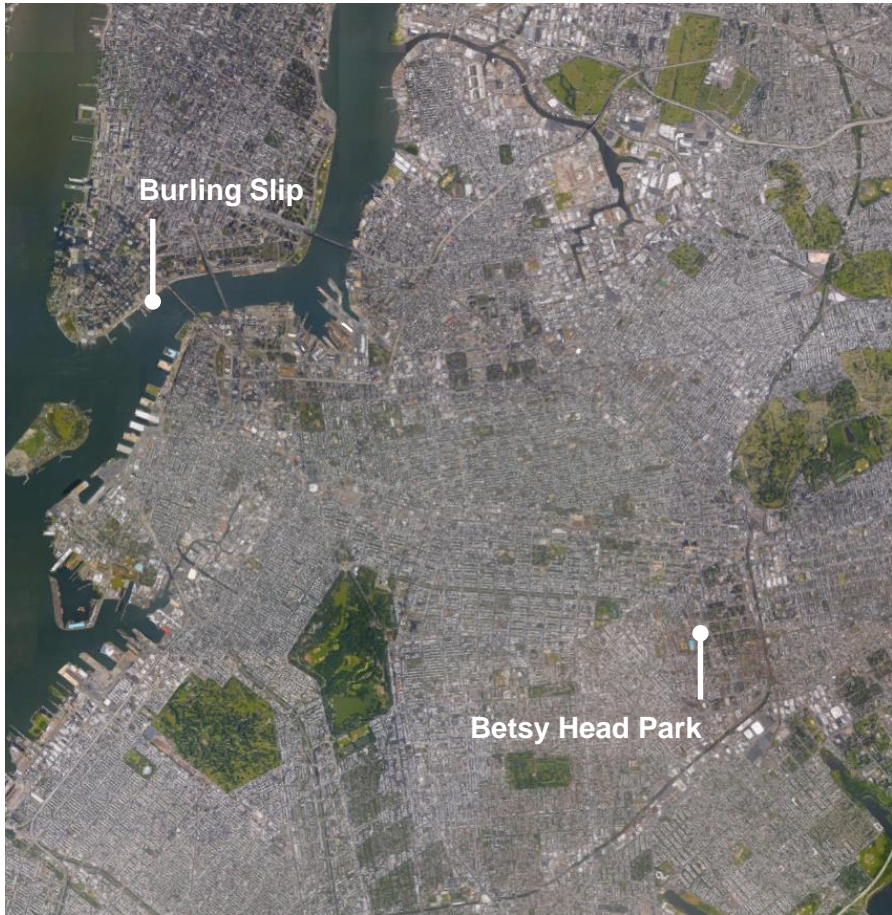


Water Play Area

image credit: Rockwell Group



Case Study – Imagination Playground at Burling Slip



Site Location



Inspiration

image credit: Rockwell Group



NYC Parks

Case Study – Imagination Playground at Betsy Head Park



Existing conditions

image credit: Rockwell Group



Case Study – Imagination Playground at Betsy Head Park

GOALS

- Water, sand and creative block play
- Year round, secure play space for all ages
- Playground as centerpiece of the park, a 360 viewing
- Temporary and permanent play features climbing, sliding, and block building
- Ramp as major play feature and connecting element



NYC Parks

Case Study – Imagination Playground at Betsy Head Park



Playground and Adult Fitness Area

image credit: Rockwell Group



Case Study – Imagination Playground at Betsy Head Park



Sand and Block Play Areas

image credit: Rockwell Group



Case Study – Imagination Playground at Betsy Head Park

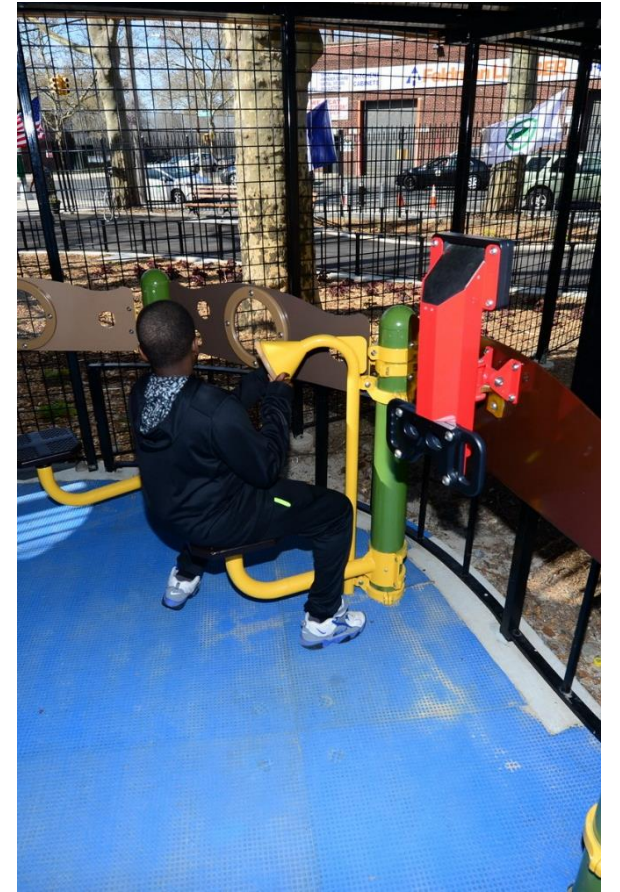


Water Play

image credit: Rockwell Group



Case Study – Imagination Playground at Betsy Head Park



Standard Play Components along Ramp



Case Study – Imagination Playground at Betsy Head Park



Block Play



Case Study – Imagination Playground at Betsy Head Park



Sunset Park Pool



image credit: Rockwell Group



Case Study – Imagination Playground in a Box

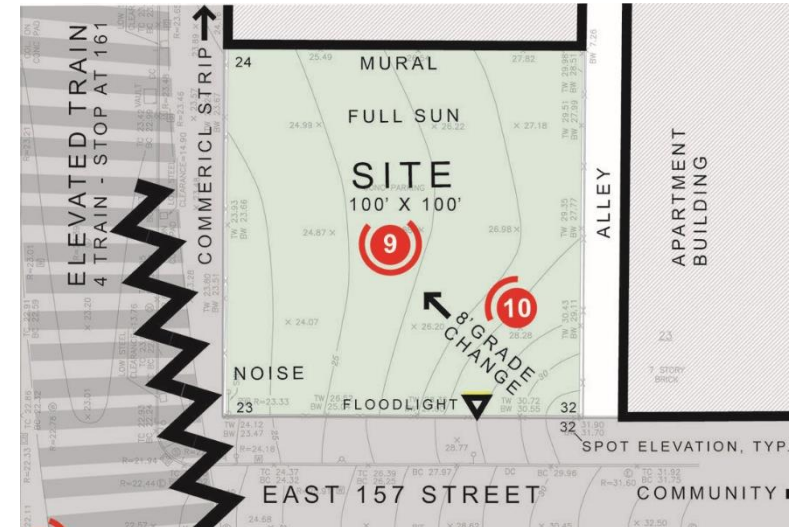
River Avenue Playground



Site Context / Inspiration



Case Study – River Avenue Playground





Spray Area Sequenced with Elevated Rail Line



NYC Parks

Case Study – River Avenue Playground



Spray Area Sequenced with Elevated Rail Line

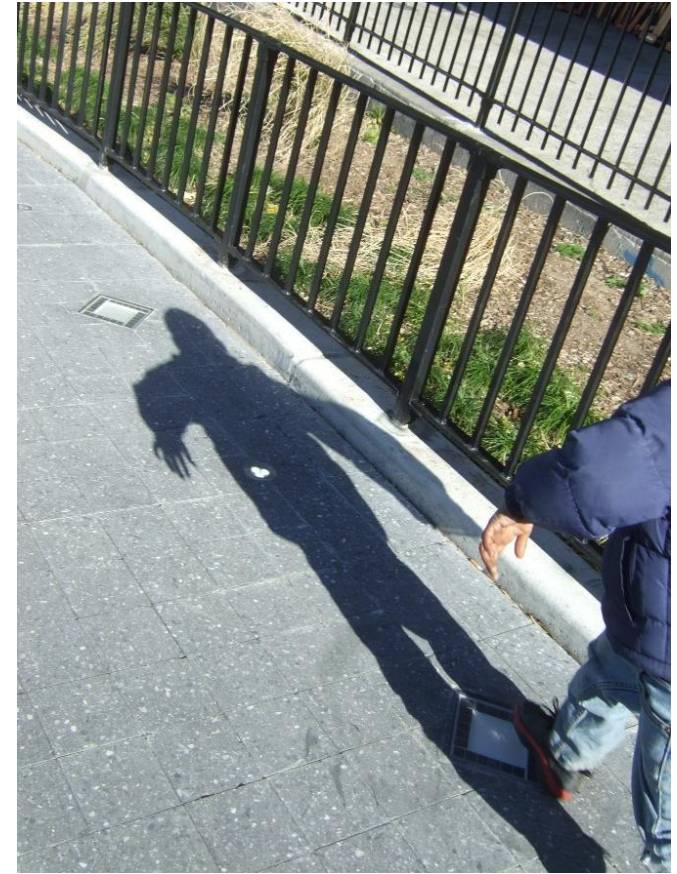


NYC Parks

Case Study – River Avenue Playground

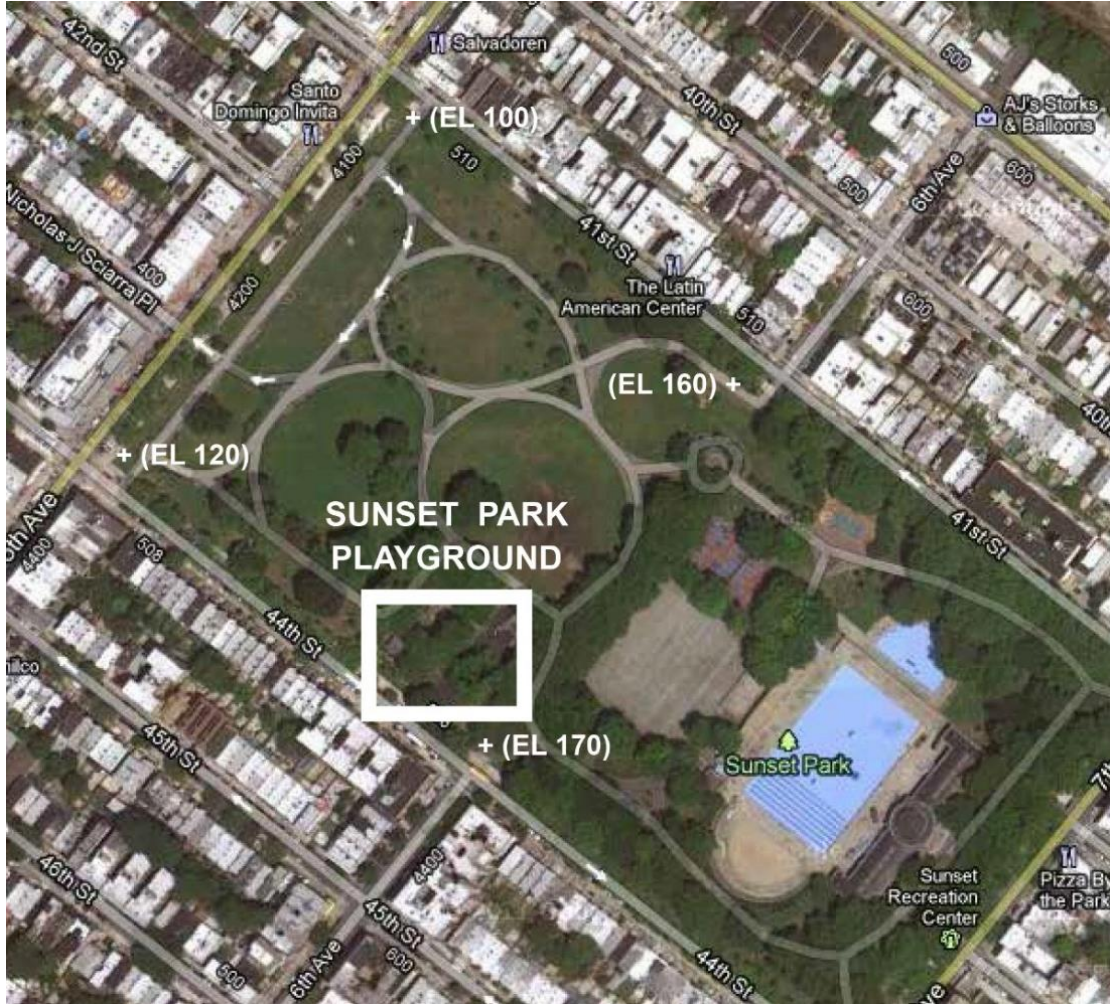


Stepped Play and Spray Sequence



Case Study – River Avenue Playground

Sunset Park Playground



Site Location



History



NYC Parks

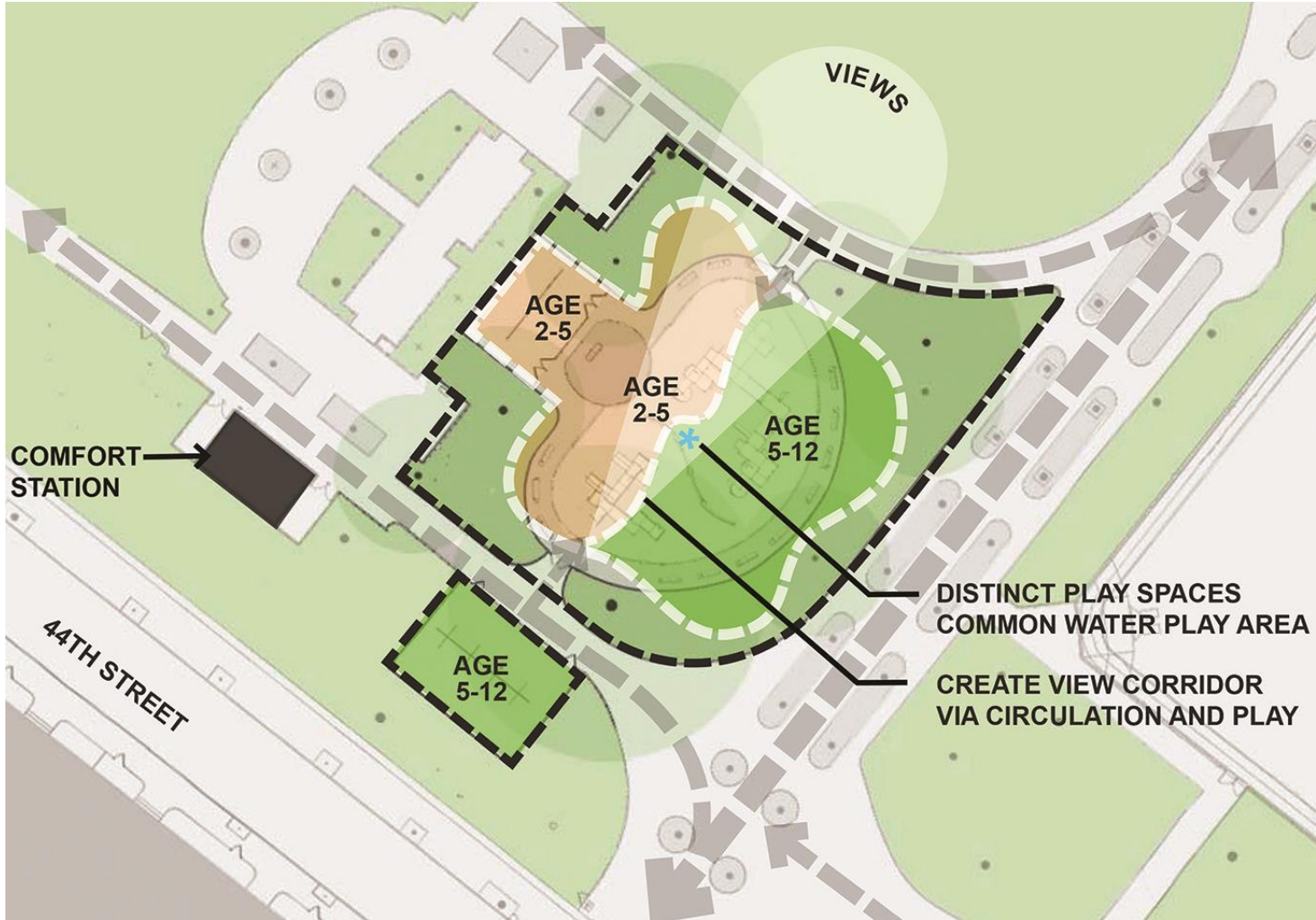
Case Study – Sunset Park Playground



Inspiration



Case Study – Sunset Park Playground



Use Diagram



Existing Conditions



NYC Parks

Case Study – Sunset Park Playground



Inspiration



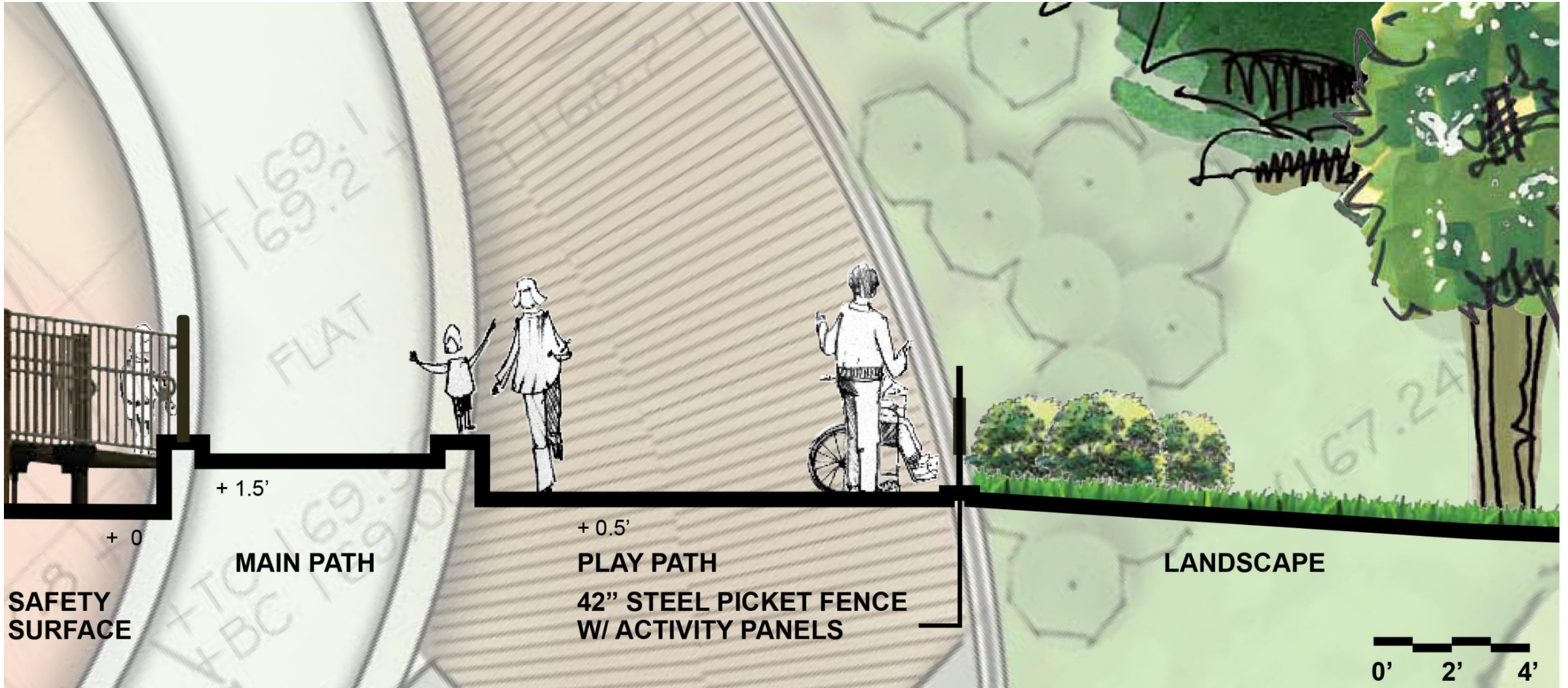
Case Study – Sunset Park Playground



Schematic Plan



Case Study – Sunset Park Playground



Play Ramp with Varied Elevations



NYC Parks

Case Study – Sunset Park Playground



Sand Play

Tactile and narrative play

Free play



NYC Parks

Case Study – Sunset Park Playground



Overall Park Perspective



NYC Parks

Case Study – Sunset Park Playground

Thank You



Parks





PARKS WITHOUT BORDIERS

Ideas for the Next Generation of Urban Parks and Public Space



NYC Parks

