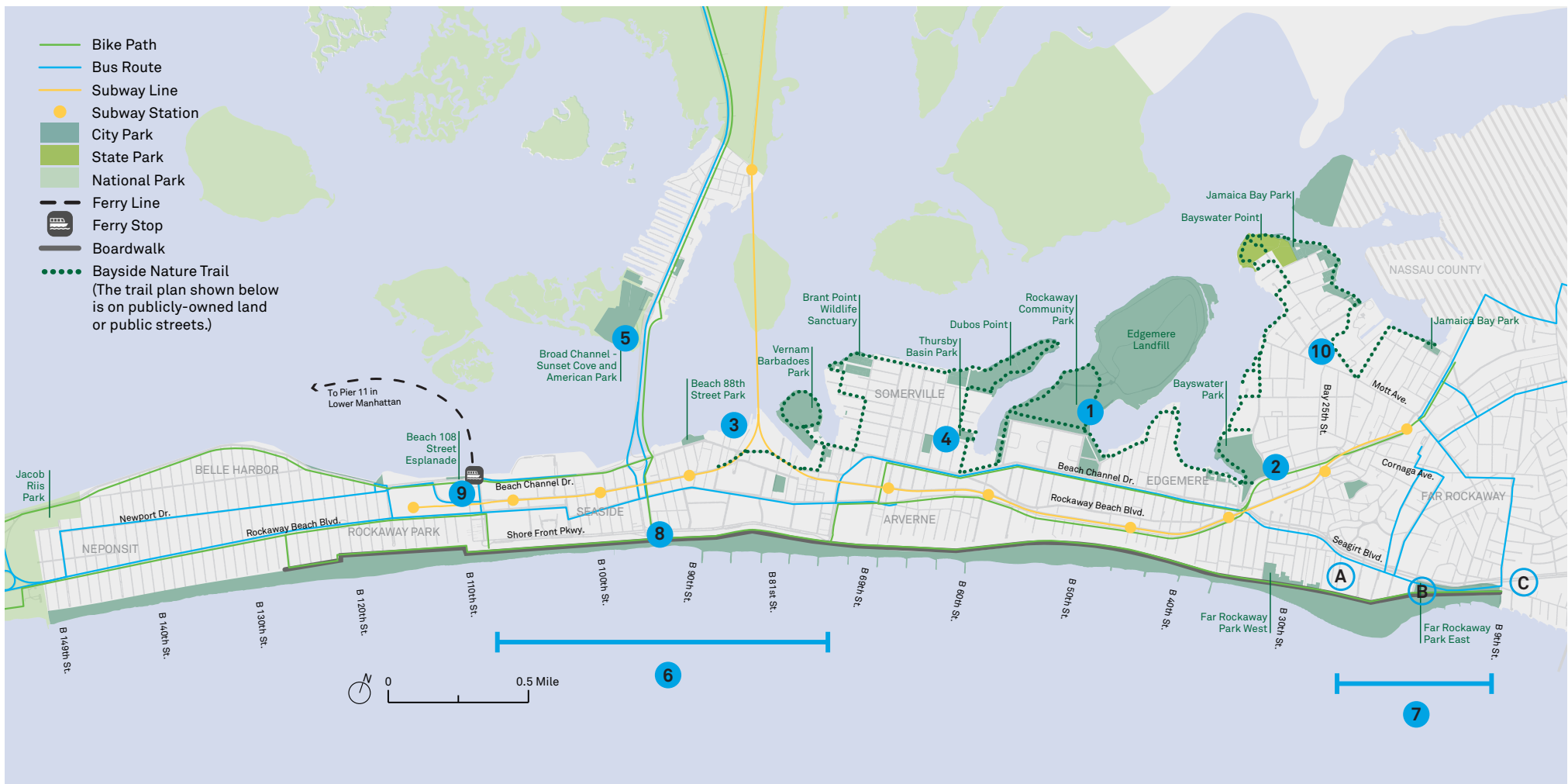


Rockaway Parks Conceptual Plan





Executive Summary

Spring 2014

The City of New York is pleased to present the *Rockaway Parks Conceptual Plan*. This plan highlights our park and open space goals in the wake of Hurricane Sandy: to replace facilities lost in the storm, improve existing parks across the Rockaway Peninsula and Broad Channel, and create a long-term vision that integrates resiliency and enhances community protection.

We are deeply committed to creating a more resilient New York City—as outlined in the *One City, Rebuilding Together* report and *PlaNYC Progress Report 2014*, both released earlier this year—with a long-term focus on preparing for and protecting against the impacts of climate change. On the

peninsula, we are currently constructing a new Rockaway boardwalk—elevated above the 100-year floodplain, built from steel-reinforced concrete and bolstered with multiple layers of protection, including approximately six miles of retaining walls and planted dunes. The *Rockaway Parks Conceptual Plan* will complement this boardwalk reconstruction by integrating recreational facilities adjacent to the boardwalk and providing a broader vision for resilient parks and open space.

The Conceptual Plan reflects extensive community input, including discussions with Rockaway and Broad Channel residents that began in the spring of 2013. We would like to thank these residents for the considerable time and effort they committed to helping us to develop this plan.

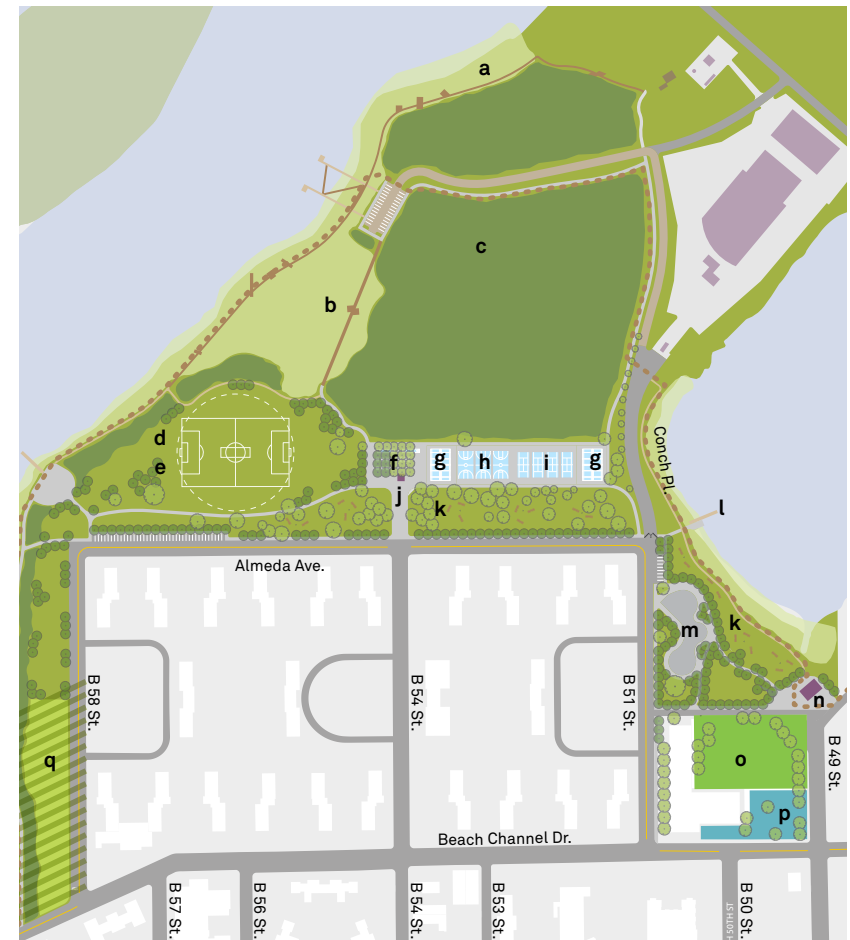
Moving forward, the *Rockaway Parks Conceptual Plan* will guide our future planning and funding efforts. We invite you

to read through this brochure to take a look at the concept designs and cost estimates for our ten priority projects.

Parks contribute to New Yorkers' overall quality of life by serving as places for recreation and fitness, quiet contemplation, community gathering, and arts and culture. Perhaps most critical in the face of climate change, parks are vital components of resilient planning and infrastructure. These projects will ultimately create a cohesive, resilient and sustainable parks and recreation system across the Rockaway Peninsula and Broad Channel, keeping generations to come active and well protected.



1 Rockaway Community Park



The acquisition of land along Conch Place allows Rockaway Community Park to have water access along the inlet and to connect with an existing playground. The park will refurbish existing sports facilities and have a gateway to the public on Beach Channel Drive. The view to the left looks northwest to Jamaica Bay.

Total: \$26 M
(All estimates in 2014 dollars)

Note: All amenities in the conceptual plan are illustrative in nature and the exact locations of amenities may be subject to change once the sites are fully designed.

- a. Wetland Restoration
- b. Proposed Boardwalk and Site Amenities
- c. Upland Forest Restoration
- d. Cricket Field (1)
- e. Soccer Field (1)
- f. Gaming Area: Ping Pong, Shuffleboard
- g. Handball Courts (2)
- h. Basketball Courts (3)
- i. Tennis Courts (4)
- j. Refurbished Comfort Station
- k. BBQ, Picnic, and Landscape Areas
- l. Kayak Landing Point
- m. Skate Park
- n. Comfort Station and Park Kiosk
- o. Athletic Field in School Yard
- p. Refurbished Existing Playground
- q. Community Garden

2 Bayswater Park



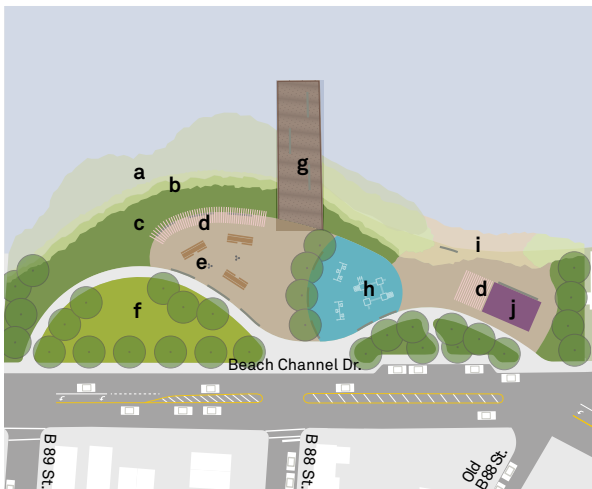
Bayswater Park is the main community park on the bay side of the Rockaways. The project retains the existing courts and proposes landscaping and recreation areas, as well as new facilities including a launch point for kayaks, boat storage, picnic areas, and a permanent stage for community events.

Total: \$28 M
(All estimates in 2014 dollars)

Note: All amenities in the conceptual plan are illustrative in nature and the exact locations of amenities may be subject to change once the sites are fully designed.

- a. Running Track
- b. Upland Restoration
- c. Wetland Restoration
- d. Soccer Field (1)
- e. Cricket Field (with baseball)
- f. Baseball Field (1)
- g. Permanent Stage
- h. Prefabricated Skate Park
- i. Handball Courts (6)
- j. Basketball Courts (3)
- k. Tennis Courts (3)
- l. Junior Tennis Courts (2)
- m. BBQ and Picnic Area
- n. 5 to 12-year-old Playground
- o. Refurbished Comfort Station
- p. Toddler Playground
- q. Kayak Launch
- r. Water Feature
- s. New Park Building and Kayak Storage
- t. Public Art Plaza

3 Beach 88th Street Park



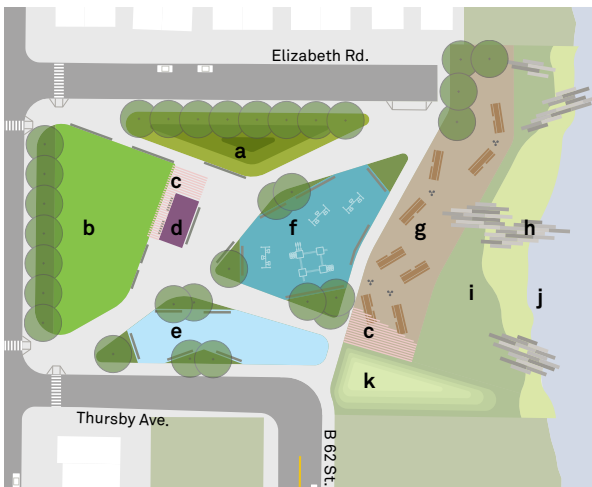
This new park will offer strong connections to the neighborhood and water. Amenities will include a new playground, picnic area, pier, kayak storage and launch as well as oyster reefs and restored wetland and riparian zones.

Total: \$7-8 M
(All estimates in 2014 dollars)

Note: All amenities in the conceptual plan are illustrative in nature and the exact locations of amenities may be subject to change once the sites are fully designed.

- a. Oyster Reef
- b. Wetland Restoration
- c. Upland Riparian Zone
- d. Shade Structures
- e. Picnic and BBQ Area
- f. Open Lawn
- g. Pier
- h. Playground
- i. Beach with Kayak Launch
- j. Comfort Station and Kayak Storage

4 Thursby Basin Park



This park will transform a currently vacant lot into a new local park with a naturalized water's edge, landscape areas and recreation spaces. The view here looks northwest to Jamaica Bay, with Rockaway Community Park in the distance.

Total: \$8–10 M
(All estimates in 2014 dollars)

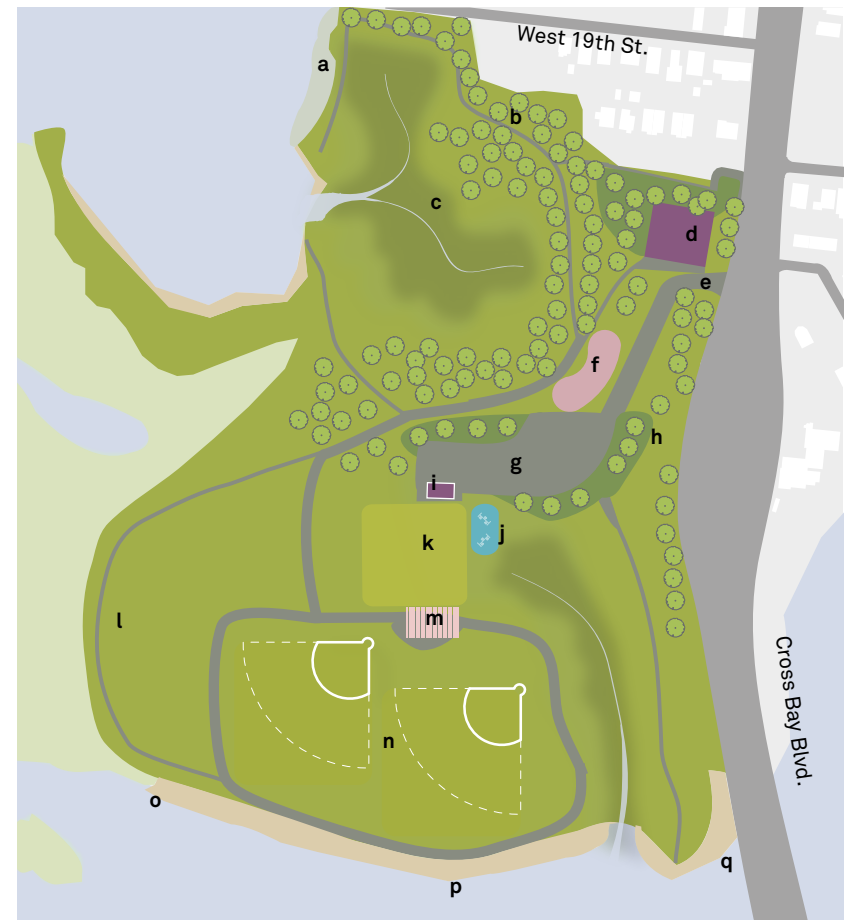
Note: All amenities in the conceptual plan are illustrative in nature and the exact locations of amenities may be subject to change once the sites are fully designed.

- a. Rain Garden
- b. Open Lawn
- c. Shade Structures
- d. Comfort Station
- e. Adult Fitness
- f. Playground
- g. BBQ Area
- h. Waterfront Seating
- i. Lawn
- j. Riparian Planting/RiPrap
- k. Bermed Lawn

5 Broad Channel - Sunset Cove and American Park

NEW YORK
CITY PARKLAND

NATIONAL
PARK
SERVICE
LAND



Broad Channel's Sunset Cove, a former marina site, will undergo ecological restoration while active uses such as ballfields and play amenities are featured at American Park. The project forefronts resiliency measures, particularly addressing site flooding.

Total: \$17-20 M
(All estimates in 2014 dollars)

Note: All amenities in the conceptual plan are illustrative in nature and the exact locations of amenities may be subject to change once the sites are fully designed.

- a. Oyster Reef
- b. Scrub-Shrub Forest Trail
- c. Salt Marsh Habitat Restoration
- d. Location of Possible Future Community Center
- e. Park Entrance from Cross Bay Blvd.
- f. Skate Park
- g. Upgraded Parking lot
- h. Stormwater Bioswales
- i. Elevated Comfort Station and Field House
- j. Tot Lot
- k. Multi-purpose Field
- l. Nature Path (Partially extends to NPS Land)
- m. Shade Structure
- n. Upgraded Baseball Fields
- o. Beach Nourishment
- p. Designated Fishing Zone
- q. Access for Canoes and Kayaks

6 Shore Front Parkway B.73rd=108th Streets



Shore Front Parkway is the main community park and source of recreation facilities for the peninsula. It lines the north side of the Boardwalk with passive and active recreation areas. The design for Shore Front Parks allows a seamless relationship between activity areas such as a skate park, landscaping, and access to the boardwalk.

Total: \$78 M
(All estimates in 2014 dollars)



* Key to letters in this plan drawing is on the following page adjacent to case study images.

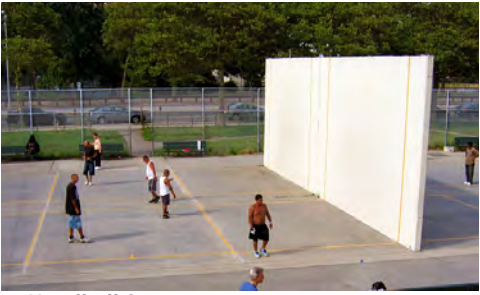
6 Shore Front Parkway B.73rd-108th Streets (Continued)



a. Hockey Rink



b. Playground with Spray Shower



c. Handball Court



d. Basketball Court



e. Gametables



f. Shuffleboard Court



g. Picnic Area



h. Events Space



i. Climbing Area



j. Skate Park / k. Junior Skate Park



l. Adult Fitness



m. Multi-purpose Field



Notes: 1. All amenities in the Rockaway Parks Conceptual Plan are illustrative in nature and the exact locations of amenities may be subject to change once the sites are fully designed.

2. All costs are in 2014 dollars and are subject to adjustment based on final design and field conditions.

3. Boardwalk access points are illustrative and all access points will be determined in alignment with the final boardwalk design.

7 Beach 9th-126th (Unbuilt PlaNYC)

A Beach 26th-27th Park Area



This new park area would be on the undeveloped lot at the end of B26 and 27th St. New fitness equipment and seating area are proposed for this site.

Total: \$2.7 M
(All estimates in 2014 dollars)

B Beach 20th Overlook



The Beach 20th overlook is a small extension of the Boardwalk. This project proposes a new shade structure, seating and a small fitness station.

Total: \$2.6 M
(All estimates in 2014 dollars)

C Beach 9th Seating & Play Area



This seating area, which was designed but not built, would complement the new playground and courts in the area.

Total: \$1.2 M
(All estimates in 2014 dollars)

Note: All amenities in the conceptual plan are illustrative in nature and the exact locations of amenities may be subject to change once the sites are fully designed.



Aerial of Current Boardwalk Area between B27 - B9

8 Beach 94th-95th Street Corridor



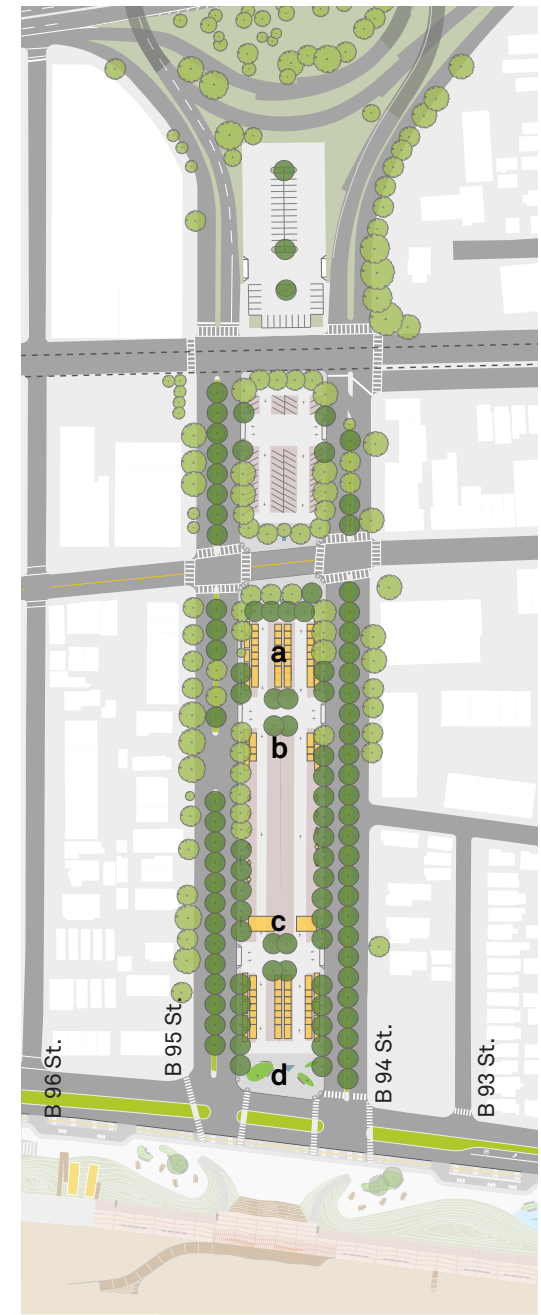
Fall Program

- a. Temporary Market Area
- b. Event Space
- c. Seasonal Outdoor Café
- d. Art/Sculpture Plaza



Winter Program

- a. Temporary Market Area
- b. Event Space
- c. Winter Festival
- d. Art/Sculpture Plaza



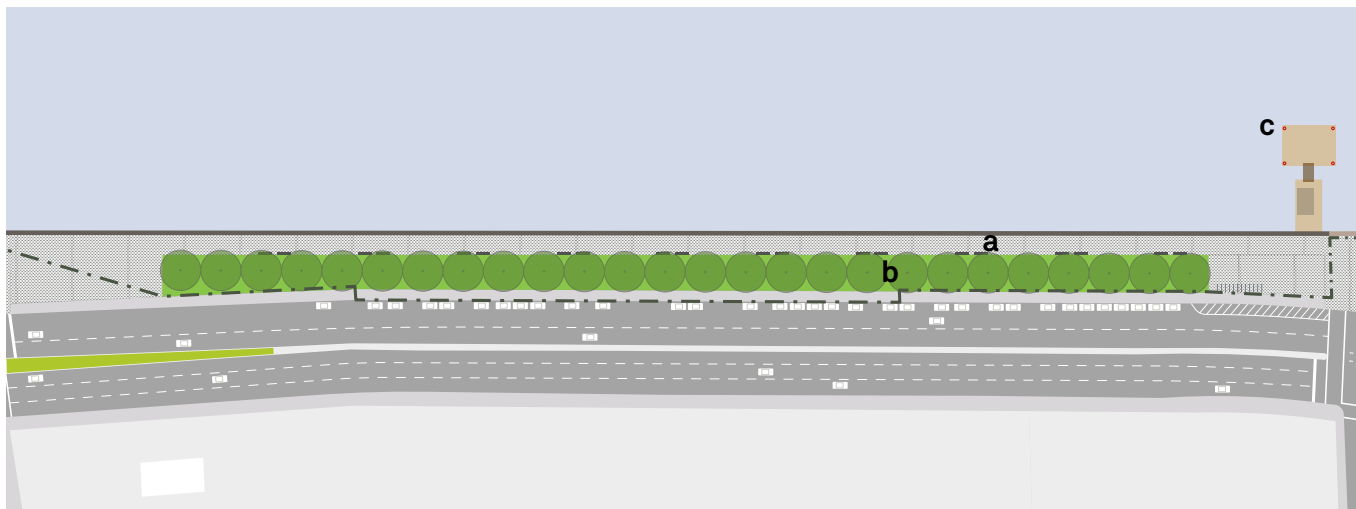
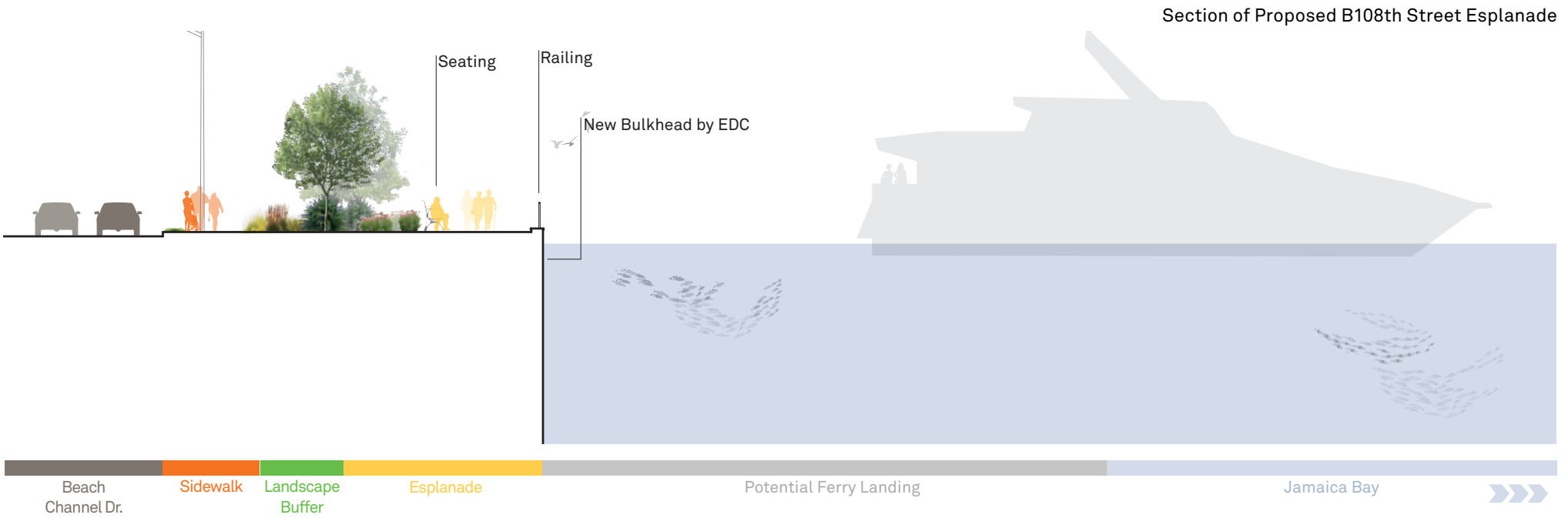
This concept plan proposes the redesign of the municipal parking lot to be used for seasonal activities when the lot is not heavily occupied by beachgoers.

Total: \$12-15 M

(All estimates in 2014 dollars)

Note: All amenities in the conceptual plan are illustrative in nature and the exact locations of amenities may be subject to change once the sites are fully designed.

9 Beach 108th Street Esplanade



This project proposes a new esplanade with seating and shaded areas along the water's edge.

- a. Esplanade
- b. Landscape Buffer
- c. Possible Ferry Pier

(To be constructed by National Grid)

Note: All amenities in the conceptual plan are illustrative in nature and the exact locations of amenities may be subject to change once the sites are fully designed.

10 Bay Side Nature Trail



The Bay Side Nature Trail would offer a walking connection between the bay side parks along the water's edge. The project would also restore natural habitats and potentially offer berms to reduce the impact of storm surges in neighborhoods.

Total: \$5-6 M
(All estimates in 2014 dollars)

Note: All amenities in the conceptual plan are illustrative in nature and the exact locations of amenities may be subject to change once the sites are fully designed.

- Street-End Park
- Kayak/Canoe Launch
- Bird Blind
- Fishing Access
- Existing Path
- Proposed Path on DPR Property
- Potential Path on other Publicly Owned Land
- Potential Path through Streets
- NYC Parks Property
- Other Publicly Owned Land



Section of Proposed Bay Side Nature Trail

